



## 75 Ohm SMB Plug Right Angle Connector Clamp/ Solder Attachment For RG180, RG195

### TECHNICAL DATA SHEET

**PE4265**

#### 75 Ohm SMB Plug Right Angle Connector Clamp/Solder Attachment For RG180, RG195

##### Configuration

Connector	SMB Plug
Connector Interface Type	RG180, RG195
Cable Attachment Method (Shield/Contact)	Clamp/Solder
Body Style	Right Angle

##### Electrical Specifications

Impedance, Ohms	75
-----------------	----

##### Mechanical Specifications

###### Size

Length, in [mm]	0.725 [18.42]
Width/Dia., in [mm]	0.362 [9.19]
Height, in [mm]	0.643 [16.33]
Weight, lbs [g]	0.027 [12.25]

###### Connector

Type	SMB Plug
Contact Material and Plating	Gold
Outer Conductor Material and Plating	Brass, Nickel
Body Material and Plating	Brass, Nickel
Dielectric Type	PTFE

**Compliance Certifications** (visit [www.Pasternack.com](http://www.Pasternack.com) for current document)

##### Plotted and Other Data

Notes: Values at 25 °C, sea level

75 Ohm SMB Plug Right Angle Connector Clamp/Solder Attachment For RG180, RG195 from Pasternack Enterprises has same day shipment for domestic and International orders. Our RF, microwave and fiber optic products maintain a 99% availability and are part of the broadest selection in the industry.

Click the following link (or enter part number in "SEARCH" on website) to obtain additional part information including price, inventory and certifications: [75 Ohm SMB Plug Right Angle Connector Clamp/Solder Attachment For RG180, RG195 PE4265](http://www.pasternack.com/smb-plug-standard-rg180-rg195-connector-pe4265-p.aspx)

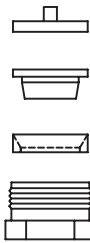
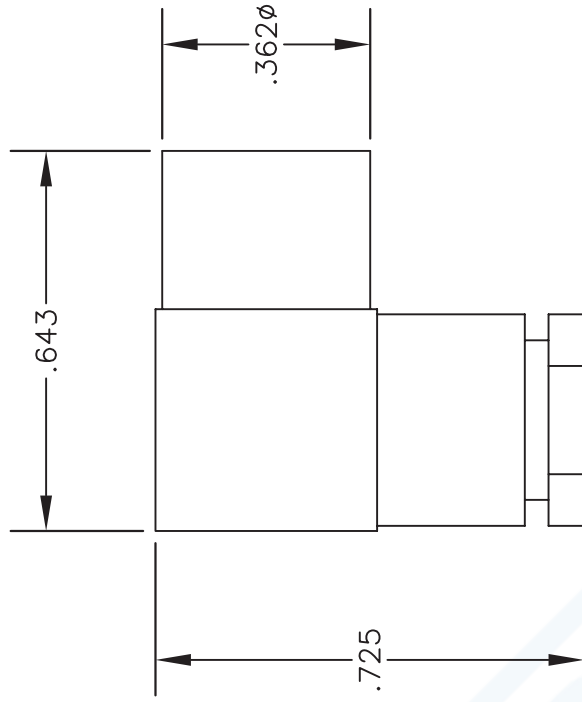
URL: <http://www.pasternack.com/smb-plug-standard-rg180-rg195-connector-pe4265-p.aspx>

The information contained in this document is accurate to the best of our knowledge and representative of the part described herein. It may be necessary to make modifications to the part and/or the documentation of the part, in order to implement improvements. Pasternack reserves the right to make such changes as required. Unless otherwise stated, all specifications are nominal.



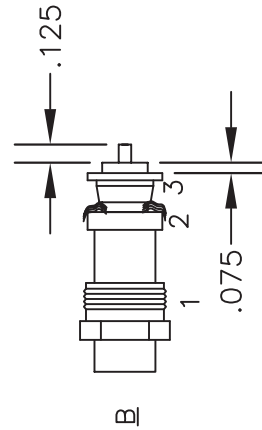
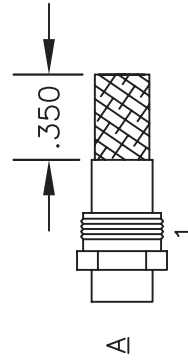
**MATERIALS**

BODY	BRASS NICKEL PLATED
CONTACT	GOLD PLATED
INSULATOR	PTFE



ASSEMBLY PROCEDURES

1. SLIDE CLAMP NUT (1) OVER CABLE AS SHOWN IN A. SLIDE COMPRESSION WASHER (2) OVER BRAID & SEAT AGAINST JACKET. FLAIR BRAID OVER COMPRESSION WASHER (2).
2. SLIDE BRAID CLAMP (3) OVER DIELECTRIC & UNDER BRAID. PUSH INTO WASHER UNTIL IT STOPS. STRIP CABLE AS SHOWN IN B. TRIM EXCESS BRAID FLUSH WITH SURFACE OF COMPRESSION WASHER (2). INSERT CABLE ASSEMBLY INTO BODY & TIGHTEN. SOLDER CENTER CONDUCTOR IN PLACE.
3. INSERT PTFE (4) INTO CONNECTOR. PRESS DOWN CAP.



STRIPPING DIMENSIONS



**PASTERNAK ENTERPRISES, INC.**  
PO BOX 16759, IRVINE, CA 92623  
PHONE (949) 261-1920 FAX (949) 261-7451  
WEB ADDRESS: www.pasternack.com  
E-MAIL ADDRESS: sales@pasternack.com  
**COAXIAL & FIBER OPTICS**

DWG TITLE **PE4265** DES. "75 OHM SMB" PLUG, RIGHT ANGLE, CLAMP ATTACHMENT FOR RG180 & RG195

REV. - FSCM NO. 53919 CAD FILE 042309 SCALE N/A SIZE A 147

**NOTES:**

1. UNLESS OTHERWISE SPECIFIED ALL DIMENSIONS ARE NOMINAL.
2. ALL SPECIFICATIONS ARE SUBJECT TO CHANGE WITHOUT NOTICE AT ANY TIME.
3. DIMENSIONS ARE IN INCHES.